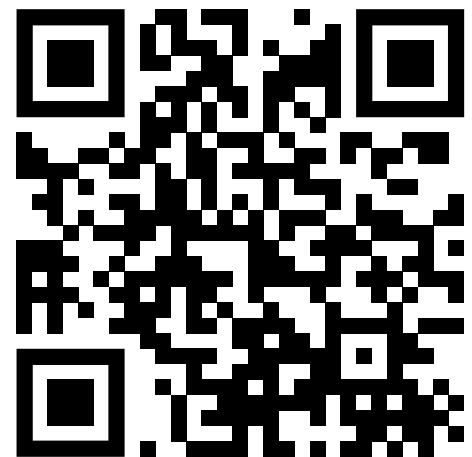
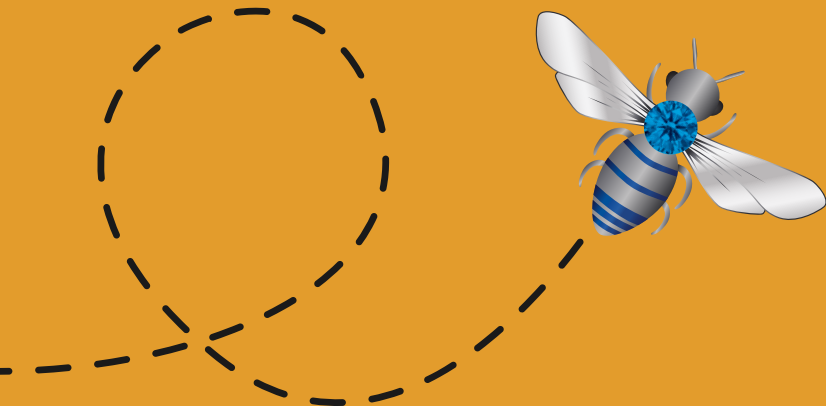


# CRYSTAL BEES

*Bistro - Bar - Bands - Big Games - Bowling*

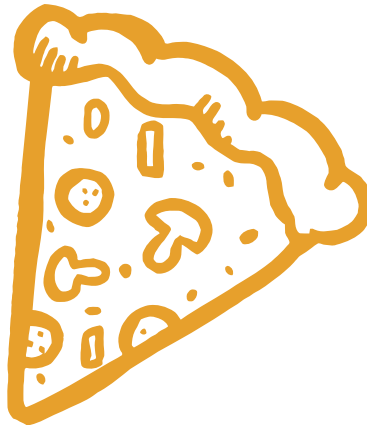
## CATERING & EVENT GUIDE



# Catering Packages

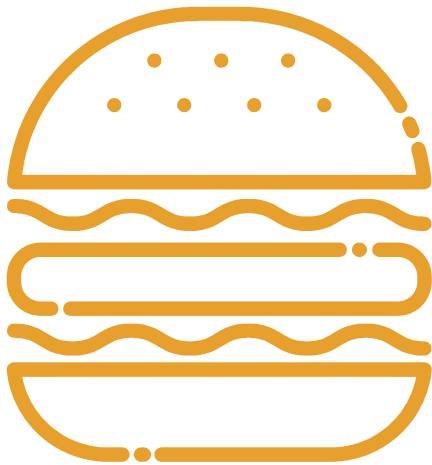
## BAR BITES - \$25

French Fries  
Fried Mozzarella  
Cheeseburger or Pork Sliders  
Pretzel Bites or Mac N' Cheese Bites  
Soft Drinks



## PIZZA - \$25

Pizza (Cheese or Pepperoni)  
Boneless Wings  
Fries  
Cookies or Brownies  
Soft Drinks



## SPARE - \$25

Cheeseburger or Pork Sliders  
Assorted Wraps  
French Fries  
Cookies or Brownies  
Soft Drinks



## THE 300 - \$39

Garden or Caesar Salad  
Chicken Parmesan or Chicken Marsala  
Sliced Roast Beef or Sausage & Peppers  
Pasta (choice of Alfredo, Marinara or Vodka)  
or Roasted Potatoes  
Balsamic Medley  
Rolls & Butter  
Cookies or Brownies  
Soft Drinks



## STRIKE - \$29

Garden or Caesar Salad  
Chicken Parmesan or Chicken Marsala  
Pasta (choice of Alfredo, Marinara or Vodka)  
Rolls & Butter  
Cookies or Brownies  
Soft Drinks

# CRYSTAL BEES

ALL PRICING IS PER PERSON

## 20 Person Minimum

**KIDS**

# **BIRTHDAY**



## **TWO HOUR PARTY INCLUDES**

**one hour of bowling and shoes**

**buffet of cheese pizza**

**one cupcake per child**

**soft drinks**

**one return bowling pass per child**

**happy birthday paper goods & tablecloths**

**\$24.99\***

**per child (12 and younger)**

**\*25% service charge and tax not included**

**6 child minimum (limit of 16)**

**no outside food or drinks permitted**

**\$50 PARTY DEPOSIT**

## **ESSENTIAL PARTY ADD-ONS**

**arcade cards**

**souvenir bowling pin for the birthday child**

**party clown and balloonist**

**BOOK YOUR  
NEXT PARTY**

**860-276-2337 X1**

**CRYSTAL BEES**

**CRYSTALBEES.COM • 240 SPRING ST • SOUTHTON**

**TEEN**

# **BIRTHDAY**



## **TWO HOUR PARTY INCLUDES**

**one hour of bowling and shoes**  
**buffet of cheese pizza, boneless wings & fries**  
**cookies or brownies**  
**soft drinks**  
**one return bowling pass per child**  
**happy birthday paper goods & tablecloths**

**\$29.99\***

**per child (13-17)**

**\*25% service charge and tax not included**

**6 child minimum (limit of 16)**

**no outside food or drinks permitted**

**\$50 PARTY DEPOSIT**

## **ESSENTIAL PARTY ADD-ONS**

**arcade cards**  
**souvenir bowling pin for the birthday child**

**BOOK YOUR  
NEXT PARTY**

**860-276-2337 X1**

**CRYSTAL BEES**

**CRYSTALBEES.COM • 240 SPRING ST • SOUTHTON**

# ADULT BIRTHDAY



## TWO HOUR PARTY INCLUDES

**one hour of bowling and shoes**  
**buffet of garden salad, chicken parmesan,**  
**pasta (choice of alfredo, marinara,**  
**or vodka), rolls & butter**  
**cookies or brownies**  
**soft drinks**  
**paper goods & tablecloths**

**\$35.00\***

**per person (18 and up)**  
**\*25% service charge and tax not included**  
**minimum 12 people (limit of 32)**  
**no outside food or drinks permitted**

**\$100 PARTY DEPOSIT**

## ESSENTIAL PARTY ADD-ONS

**cornhole**  
**arcade**  
**bar packages**  
**souvenir bowling pin for the birthday person**

**BOOK YOUR  
NEXT PARTY**

**860-276-2337 X1**

**CRYSTAL BEES**

**CRYSTALBEES.COM • 240 SPRING ST • SOUTHTON**



# Bar Packages

## BEER & WINE

INCLUDES DOMESTIC BEERS AND HOUSE WINES BY THE GLASS.

1 HOUR \$25 • 2 HOURS \$40 • 3 HOURS \$55 • 4 HOURS \$70

DRINK TICKET \$8

## STANDARD OPEN BAR

INCLUDES ALL BEERS (*Excluding Double IPAs*),

WINE BY THE GLASS AND CHOICE OF WELL LIQUORS.\*

1 HOUR \$30 • 2 HOURS \$50 • 3 HOURS \$65 • 4 HOURS \$85

DRINK TICKET \$12

## PREMIUM OPEN BAR

INCLUDES ALL BEERS (*Excluding Double IPAs*), ALL WINES BY THE GLASS,  
AND CALL LIQUORS.\*

1 HOUR \$40 • 2 HOURS \$70 • 3 HOURS \$100 • 4 HOURS \$125

DRINK TICKET \$15

## TOP SHELF OPEN BAR

INCLUDES ALL BEERS, ALL WINES BY THE GLASS, AND ALL LIQUORS.\*

1 HOUR \$55 • 2 HOURS \$95 • 3 HOURS \$130 • 4 HOURS \$160

DRINK TICKET \$18

*\* No shots available with any package. All prices listed are per person.*

*Prices are based upon a minimum of 10 people.*

*Prices are subject to 25% service charge and CT Sales Tax.*

*Guests must be 21 or older in order to consume alcohol.*

# Appetizers

<i>Appetizer</i>	<b>SMALL FEEDS ABOUT 10</b>	<b>MEDIUM FEEDS ABOUT 20</b>	<b>LARGE FEEDS ABOUT 40</b>
BACON WRAPPED SCALLOPS	\$110	\$215	\$400
BONE-IN WINGS	\$75	\$145	\$265
BONELESS WINGS	\$60	\$95	\$180
EGG ROLLS	\$90	\$185	\$275
CHEESE & CRACKER PLATTER	\$45	\$80	\$150
CHEESEBURGER SLIDERS	\$75	\$150	\$300
CHICKEN TENDERS	\$60	\$120	\$240
CHIPS & SALSA	\$25	\$45	\$80
COCONUT SHRIMP	\$60	\$115	\$220
CRUDITE & RANCH PLATTER (GF)	\$45	\$85	\$160
FRENCH FRIES	\$45	\$85	\$160
FRESH FRUIT PLATTER (GF)	\$55	\$100	\$200
FRIED MOZZARELLA & MARINARA	\$35	\$65	\$120
MAC & CHEESE BITES	\$45	\$85	\$160
PRETZEL BITES	\$40	\$75	\$130
PULLED PORK SLIDERS	\$65	\$125	\$240
STROMBOLI Pepperoni or Broccoli & Cheese	\$50	\$90	\$175
STUFFED MUSHROOMS Vegetable or Sausage Stuffing	\$60	\$115	\$220

# Entrees

## Chicken

	SMALL FEEDS ABOUT 10	MEDIUM FEEDS ABOUT 20	LARGE FEEDS ABOUT 40
HERB ROASTED CHICKEN QUARTERS (GF)	\$50	\$95	\$180
CHICKEN MARSALA	\$55	\$105	\$200
CHICKEN FLORENTINE	\$55	\$105	\$200
CHICKEN PARMESAN	\$55	\$105	\$200

## Beef

	SMALL FEEDS ABOUT 10	MEDIUM FEEDS ABOUT 20	LARGE FEEDS ABOUT 40
SLICED ROAST BEEF WITH MUSHROOM GRAVY	\$60	\$115	\$220
BEEF TENDERLOIN (GF)	\$MP	\$MP	\$MP
ROASTED PRIME RIB WITH AU JUS (GF)	\$200	\$390	\$765

## Pork

	SMALL FEEDS ABOUT 10	MEDIUM FEEDS ABOUT 20	LARGE FEEDS ABOUT 40
HONEY GLAZED HAM (GF)	\$70	\$110	\$200
ROSEMARY CRUSTED PORK LOIN (GF)	\$70	\$110	\$200
SAUSAGE AND PEPPERS (GF)	\$60	\$115	\$220

## Seafood

	SMALL FEEDS ABOUT 10	MEDIUM FEEDS ABOUT 20	LARGE FEEDS ABOUT 40
CRAB CAKES	\$80	\$130	\$260
GRILLED ATLANTIC SALMON (GF)	\$100	\$200	\$400
STUFFED SHRIMP	\$140	\$280	\$360

## Vegetarian

	SMALL FEEDS ABOUT 10	MEDIUM FEEDS ABOUT 20	LARGE FEEDS ABOUT 40
BALSAMIC PORTOBELLO MUSHROOMS	\$35	\$65	\$130
EGGPLANT ROLLATINI	\$50	\$95	\$180



# Sides

## Salad

SMALL FEEDS ABOUT 10	MEDIUM FEEDS ABOUT 20	LARGE FEEDS ABOUT 40
----------------------------	-----------------------------	----------------------------

CAESAR	\$35	\$60	\$100
COBB (GF)	\$40	\$75	\$140
GARDEN (GF/V)	\$30	\$45	\$80
GREEK (GF/V)	\$35	\$60	\$100

## Pasta

SMALL FEEDS ABOUT 10	MEDIUM FEEDS ABOUT 20	LARGE FEEDS ABOUT 40
----------------------------	-----------------------------	----------------------------

ALFREDO	\$50	\$90	\$170
BOLOGNESE	\$55	\$100	\$190
MAC & CHEESE	\$50	\$95	\$185
MARINARA	\$30	\$55	\$100
VODKA	\$55	\$100	\$180

## Veggies & Grains

SMALL FEEDS ABOUT 10	MEDIUM FEEDS ABOUT 20	LARGE FEEDS ABOUT 40
----------------------------	-----------------------------	----------------------------

VEGETABLE MEDLEY	\$45	\$85	\$160
GREEN BEANS	\$50	\$90	\$165
HONEY GLAZED CARROTS	\$45	\$80	\$145
MASHED POTATOES	\$40	\$70	\$125
ROASTED RED POTATOES	\$40	\$70	\$130
RICE PILAF	\$35	\$65	\$120

# Stations

**ADD A CHEF TO MAN YOUR STATION (80 person minimum)  
\$53 PER HOUR**

## **TACO BAR (\$20PP)**

### **INCLUDES:**

Corn Taco Shells, Flour Tortillas, Spanish Rice,  
Diced Tomatoes, Diced Onions, Shredded Lettuce,  
Jalapeños, Mixed Shredded Cheese,  
Salsa & Sour Cream

### **SELECTION OF ONE PROTEIN:**

Ground Beef, Chicken, or Refried Beans

### **ADD ONS:**

Ground Beef (+\$4pp), Chicken (+\$5pp), Steak (+\$6pp),  
Shrimp (+\$7pp), Refried Beans (+\$3pp), Tofu (+\$2pp),  
Black Beans (+\$3pp), Chipotle Sour Cream (+\$1pp),  
Pico de Gallo (+\$2pp), Guacamole (+\$2pp)

## **PENNE STATION (\$15PP)**

### **INCLUDES:**

### **SELECTION OF UP TO TWO SAUCES:**

Marinara, Alfredo, Pesto, Vodka

### **SELECTION OF UP TO TWO VEGGIES:**

Broccoli, Peas, Roasted Cherry Tomatoes,  
Olives, Roasted Eggplant

### **ADD ONS:**

Additional Sauces (+\$3pp),  
Mac & Cheese Option (+\$3pp),  
Additional Veggies (+\$1pp),  
Chicken (+\$5pp), Sausage (+\$3pp),  
Bacon (+\$2pp), Shrimp (+\$7pp)

# *Desserts*

## **CUPCAKES**

**\$25/DOZEN**

**CHOOSE YOUR CAKE:**

Vanilla or Chocolate

**FROSTING:** Vanilla or Chocolate Icing

## **COOKIES**

**\$15/DOZEN**

Chocolate Chip, Snickerdoodle,  
Oatmeal Raisin, Peanut Butter

## **BROWNIES**

**\$16/DOZEN**

Classic and Blondie

## **COFFEE & TEA STATION**

**\$3/PP**

# Add Ons

## BOWLING

PRICING INCLUDES SHOE RENTAL / MAXIMUM SIX PEOPLE PER LANE

Sunday Through Thursday - \$50/hour/lane  
Friday Before 7 - \$50/hour/lane  
Friday After 7 and Saturday - \$75/hour/lane

## ARCADE

QUANTITY OF CARDS AND MONETARY AMOUNT IS FULLY CUSTOMIZABLE  
\$1.00 ACTIVATION FEE PER CARD

## GODFATHER ROOM

HOLDS 40 PEOPLE / PRICING FOR A TWO HOUR TIME-FRAME

Sunday Through Thursday - \$150  
Friday and Saturday - \$250

## VIP LOUNGE

HOLDS 200 PEOPLE / PRICING FOR A THREE HOUR TIME-FRAME  
INCLUDES THE EXCLUSIVE USE OF FOUR BOWLING LANES AND  
CORNHOLE FOR THE DURATION OF THE EVENT

Sunday Through Thursday - \$500 Plus \$1,250 Food and Beverage Minimum  
Friday and Saturday - \$1,000 Plus \$1,500 Food and Beverage Minimum

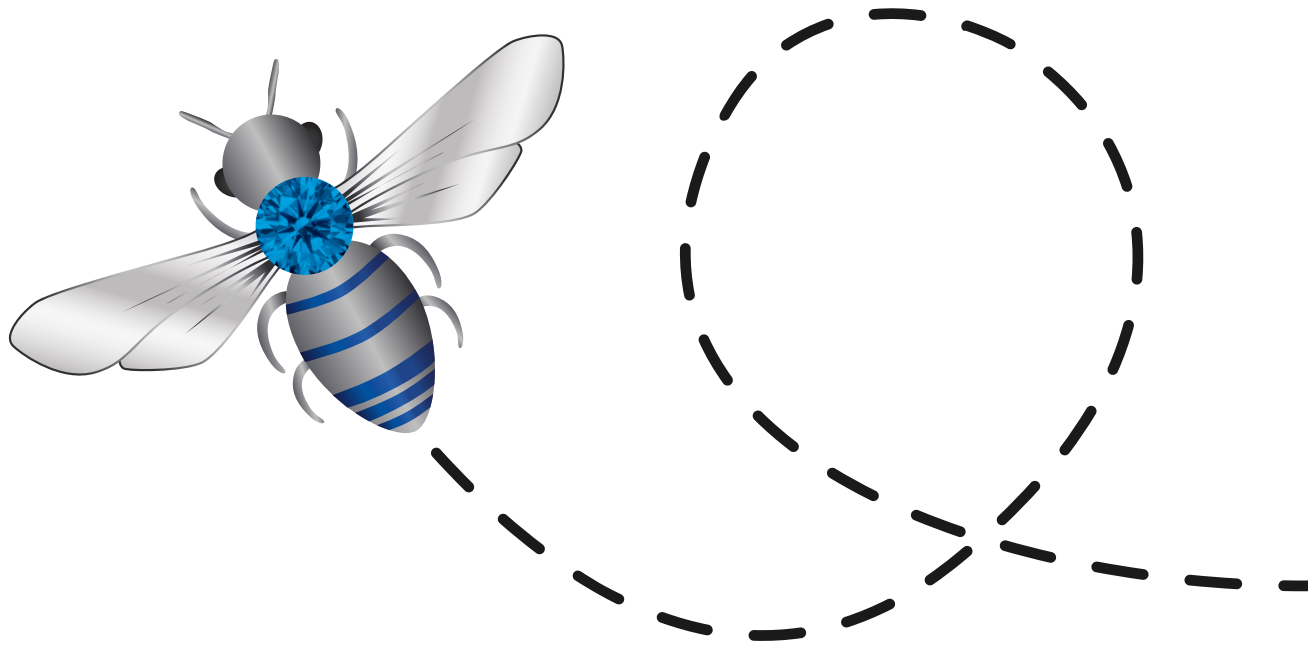
## PATIO

HOLDS 40 PEOPLE / PRICING FOR A TWO HOUR TIME-FRAME  
INCLUDES EXCLUSIVITY OF ALL PATIO SEATING AND FIREPLACES

Sunday Through Thursday - \$100 Plus \$300 Food and Beverage Minimum  
Friday and Saturday - \$100 Plus \$500 Food and Beverage Minimum

## ASK US ABOUT FACILITY RENTAL PRICING

TAX NOT INCLUDED / NO OUTSIDE FOOD OR BEVERAGES / DEPOSIT REQUIRED  
PRICES SUBJECT TO CHANGE



## **ADDRESS**

240 Spring Street  
Southington, CT 06489

## **MAIN PHONE**

(860) 276-2337

## **EMAIL**

Events@CrystalBees.com

## **WEBSITE**

CrystalBees.com/Book-Your-Event



25% service charge and tax not included. Minimum seven days in advance required.  
\$300 food minimum required. No outside food or beverages.  
30% deposit. Prices subject to change.  
GF = Gluten Free / V = Vegetarian

The health department warns that consuming raw or undercooked meats, fish, shellfish or fresh shell eggs may increase your risk for foodborne illness, especially if you have certain medical conditions. Please inform us of any food allergies.